

Hookworm and Bleeding Detection in WCE Images using Rusboost Classifier

¹K. Vijila Rani, ²M. Nisha

¹Research Scholar

Department of Information & Communication Engineering
Anna University, Chennai, Tamil Nadu, India

²Assistant Professor, Department of Electronics & Communication Engineering
Arunachala College of Engineering for Women,
Manavilai, Tamil Nadu, India

Email: ¹vijilaranijournal@gmail.com, ²nisha3011@gmail.com

DOI: <http://doi.org/10.5281/zenodo.1744883>

Abstract

Now-a-days, million ranges of individuals are having helminthiasis and this number has been increasing day by day. Automatic hookworm recognition could be a difficult task in medical field. Here projected a completely unique technique for detective work the helminthiasis from wireless capsule examination (WCE) pictures. During this paper initial adopted for WCE image with sweetening method by mistreatment Multi-scale twin Matched Filter (MDMF). Then, Piecewise Parallel Region Detection (PPRD) is employed to discover the parallel edges. This technique is extremely appropriate for detective work hookworm when put next to different standard technique.

Index Terms: hookworm; wireless capsule endoscopy; color gradient; Contourlet transform.

INTRODUCTION

Human hookworm infection is known as soil-transmitted helminthes infection by the nematode parasites includes necatoramericanus and ancylostoma. World Health Organization [1] estimates that regarding 740 million individuals area unit infected with hookworm. Hookworm are often simply known by Wireless Capsule examination (WCE). WCE was foremost developed by Given Imaging Ltd [2]. Baopu et al. [3] proposed an integrated combination of features color and texture feature then employed feature selection to

detect disease area accurately. They [4] also take chromaticity instant as the features to discriminate bleeding regions and ulcer regions. Karargyris et al. [5] proposed a novel synergistic methodology for automatically noticing polyps and perforated ulcers in WCE video frames. In [6], Shen et al. introduced an unsupervised learning approach. This concept employs scale invariant feature transform process for extraction of local image features. Segui et al. [7] introduced several works to automatically remove all the borders contaminated by abdominal content.

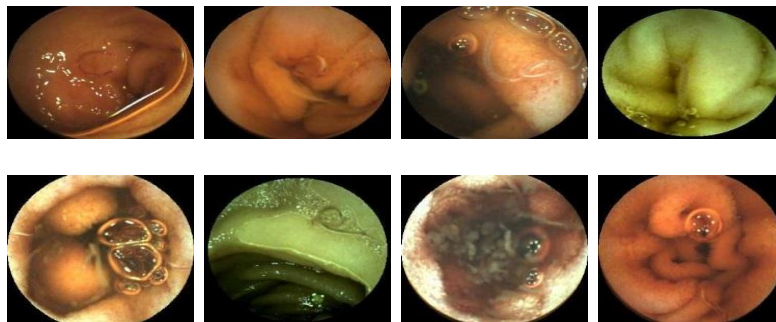


Fig. 1. Examples of WCE images having hookworms.

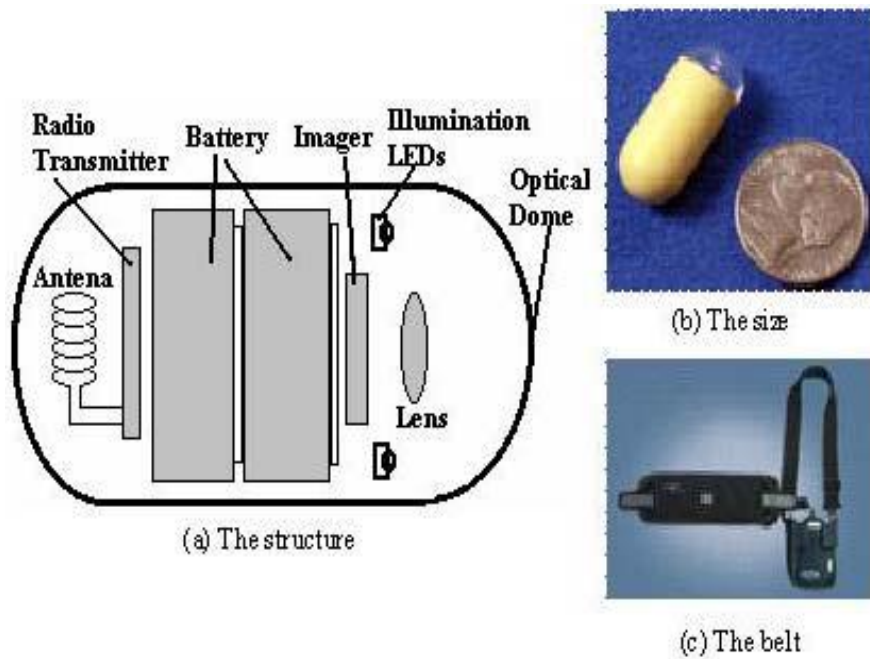


Fig: 2. WCE structure

FRAMEWORK

The characteristics of hookworms are quite totally different from haemorrhage, ulceration and polyps. The hookworm

could be a quite tiny cannular structure with totally different intensities from mucous membrane and bubble edges.

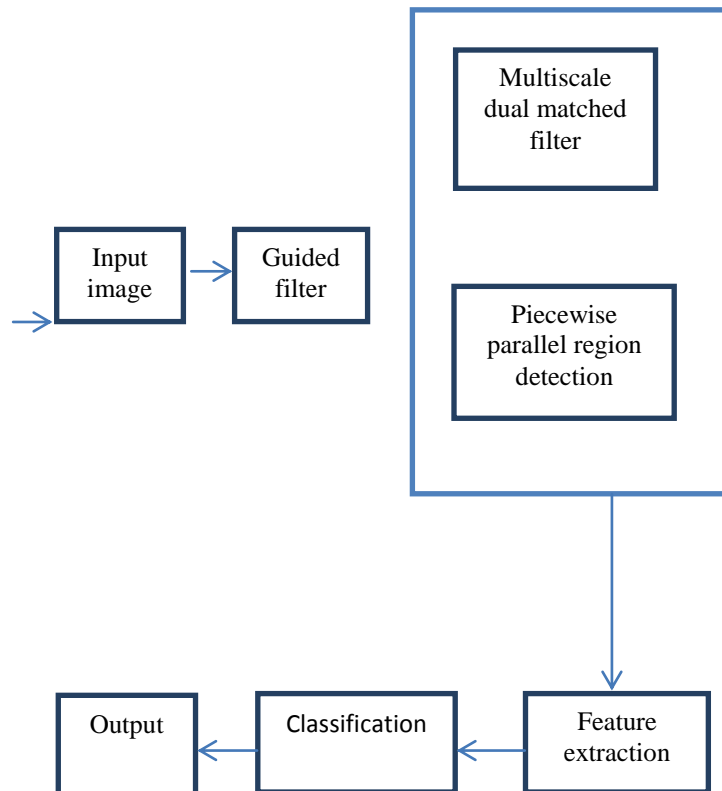


Fig: 3. Block diagram of automatic hookworm detection.

Input Image

The input image is the hookworm WCE images is acquired, which is given to the guided filter for enhancement process. Then to detect the tubular regions of hookworm enhanced image output. In our dataset, the width of the largest hookworm is less than 12 pixels.

Therefore, the largest scale is empirically set as $\sigma = 2$. Since the width of the thinnest hookworm is larger than 5 pixels, as a result, the smallest scale is set to 1:2. The appropriate value of middle scale is 1:6. Fortunately, with the production of multiple scales, the hookworm response is preserved, which highlights the potential regions of hookworm.

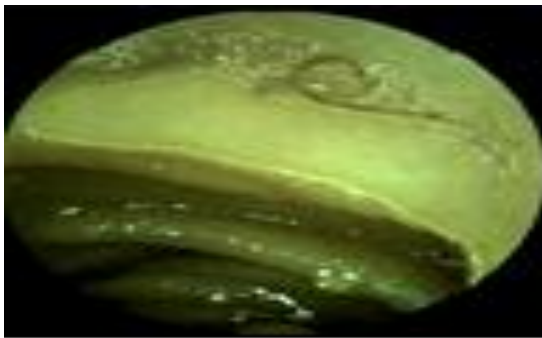


Fig. 4. Input image

Guided Filter

The target-hunting filter is 1st enforced for WCE image sweetening thanks to its smart performance and potency. Then by mistreatment multi scale twin matched filter to discover the cannular regions in WCE pictures.

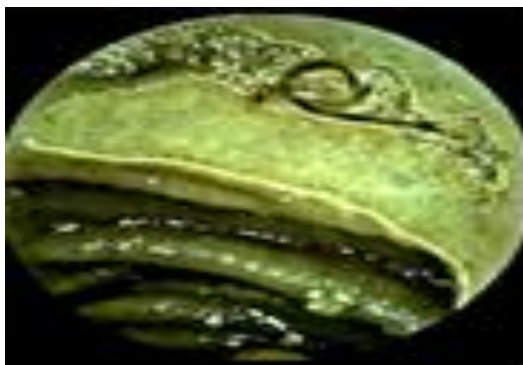


Fig. 5. Example for Guided filtered image

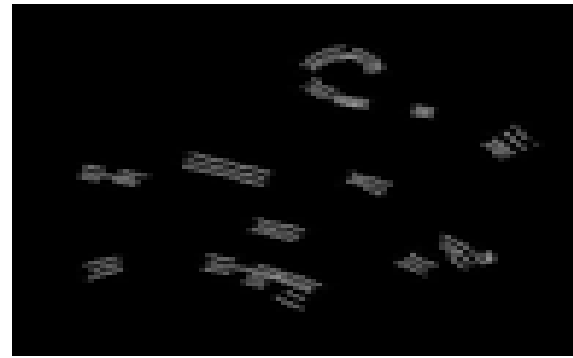


Fig. 6. Example for PPRD image

Hookworm Classification

Rusboost algorithmic rule is to wear down the classification downside on leaning knowledge. The Rusboost combines random beneath sampling (RUS) with Adaboost. RUS removes examples stochastically from the bulk category till the specified balance is achieved.

Rusboost algorithm

Given: set s of examples $(x_1, y_1), \dots, (x_m, y_m)$ with minority class $y^T \in y, |Y| = 2$

Step 1: Initialize

$$D_1(i) = 1/m \text{ for all } i$$

Step 2: do for

$$t = 1, 2, \dots, T$$

a) Create temporary training dataset s_t^1 with distribution D_t^1 using RUS.

b) Call weak learn, providing it with examples s_t^1 and their weights D_t^1 .

c) Get back a hypothesis

$$h_t: X \times Y \rightarrow [0, 1]$$

d) Calculate the pseudo-loss (for s & D_t)

$$\epsilon_t = \sum_{(i,y): y_i \neq y} D_t(i) (1 - h_t(x_i, y_i) + h_t(x_i, y))$$

e) Calculate the weight update parameter

$$\alpha_t = \frac{\epsilon_t}{1 - \epsilon_t}$$

f) Update D_t

$$D_{t+1}(i) = D_t(i) \alpha_t^{1/2(1+h_t(x_i, y_i) - h_t(x_i, y_i: y \neq y_i))}$$

g) normalize D_{t+1} :

$$\text{let } z_t = \sum_i D_{t+1}(i) \\ D_{t+1}(i) = D_{t+1}(i) / z_t$$

Step 3: output the final hypothesis

$$H(x) = \arg \max \sum_{t=1}^T h_t(x, y) \log 1/\alpha_t$$

Let x_i be a point in the feature space X and

y_i be a class label in a set of class labels Y . Each of the m examples in the data set (S) can be represented by the tuple (x_i, y_i) .

Let t be iteration between one and the maximum number of iterations T , h_t be the weak hypothesis trained on iteration t , and $h_t(x_i)$ be the output of hypothesis h_t , for instance, x_i (which may be a numeric

confidence rating).

RESULTS AND DISCUSSION

Input image

The input image is selected from the test images, these images are collected from the different patients. Here each patient having hookworm and non-hookworm images. The identification of hookworm is different from polyp, tumour and ulcer.

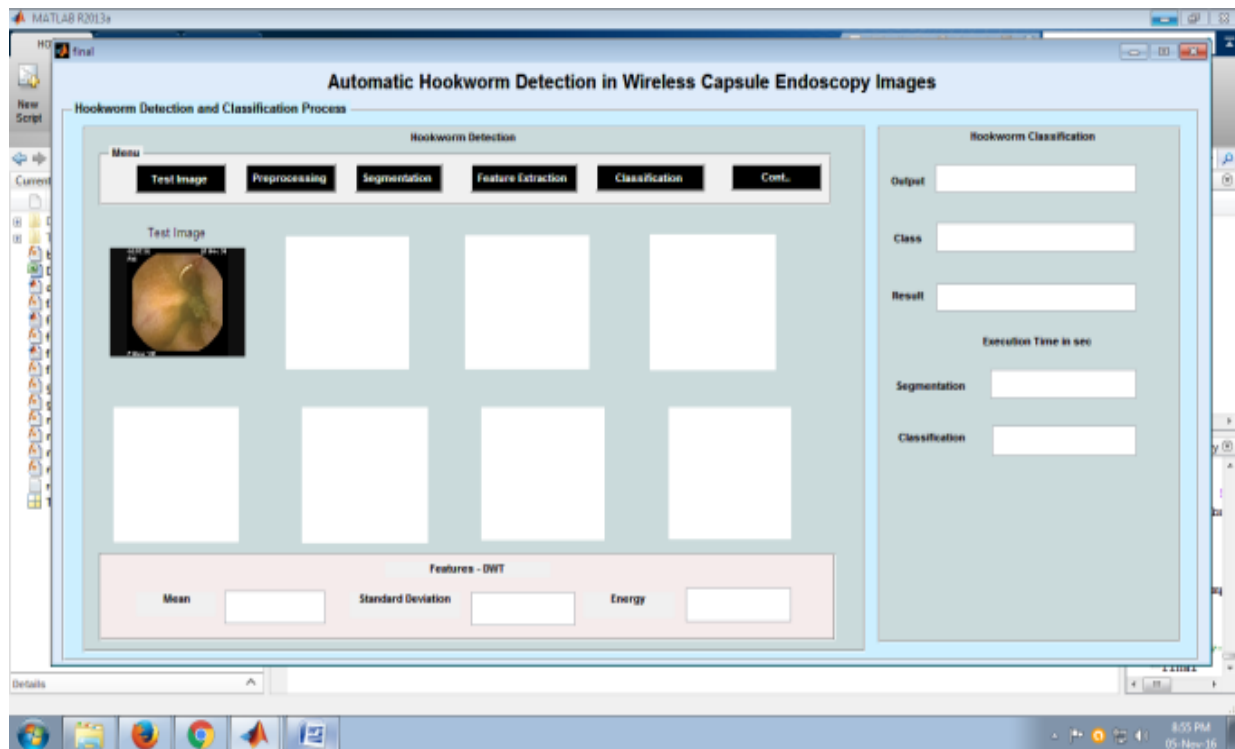


Fig: 7. Input image

Guided filter image

The input image is filtered by mistreatment target-hunting filter. The target-hunting filter is employed for WCE image sweetening thanks to its smart performance and potency. The target-hunting filter image is shown in Fig 8. The imguided filter operate performs edge

conserving smoothing on a picture, mistreatment the content of a second image, known as a target-hunting image, to influence the filtering.

The guidance image can be the image itself, a different version of the image, or a completely difference image.

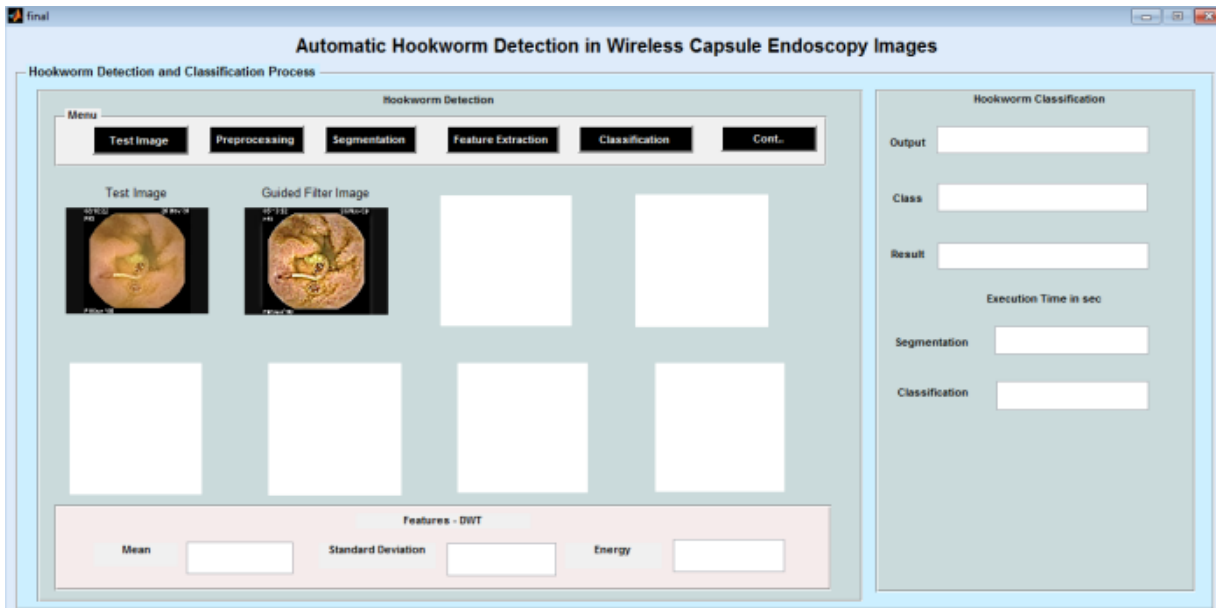


Fig: 8. Guided filter image

Segmented Image

Basically Image segmentation is that the method of dividing a picture into multiple elements or regions.

Multiscale Matched Filter Method:

In this stage twin Matched Filter is used to notice cannular region within the WCE pictures. The matched filter may be a Gaussian-shaped model, that relies on

previous data that the crosswise of a vessel is Gaussian-shaped.

Parallel Region Detection:

After cannular region detection exploitation multi-scale twin matched filter, the noticeion results contain potential cannular regions of hookworms PPRD is planned to detect the parallel edges.

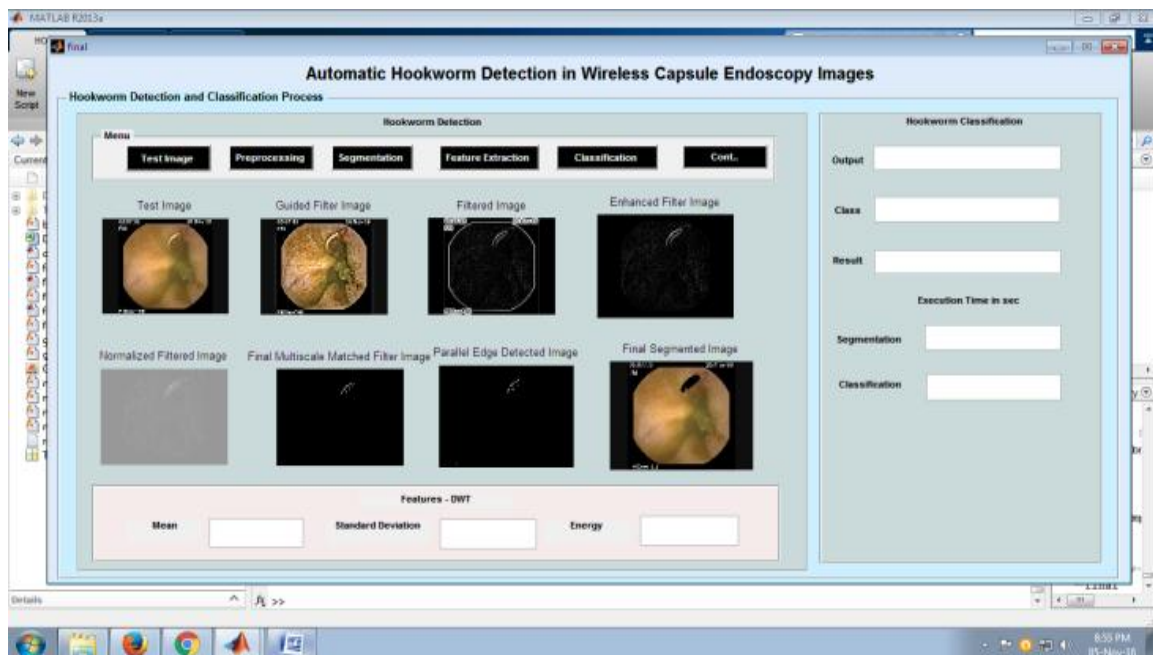


Fig: 9. Segmented images

Feature Extraction

DWT

In this stage, DWT is employed for extract the options from metameric image. Just in case of 2nd pictures, the DWT is applied to every dimension on an individual basis. As a result, there are four sub-band (LL, LH, HH, and HL) pictures at every scale.

Feature Reduction using PCA

Principle part Analysis is an economical

tool to scale back the dimension of an information set. It consists of an outsized range of reticular variables.

Final Features

After reduce the feature dimensionality, extract final feature such as mean, standard deviation and energy. These are our final feature vector. Here, accuracy, sensitivity, and execution time was varied for every input image.

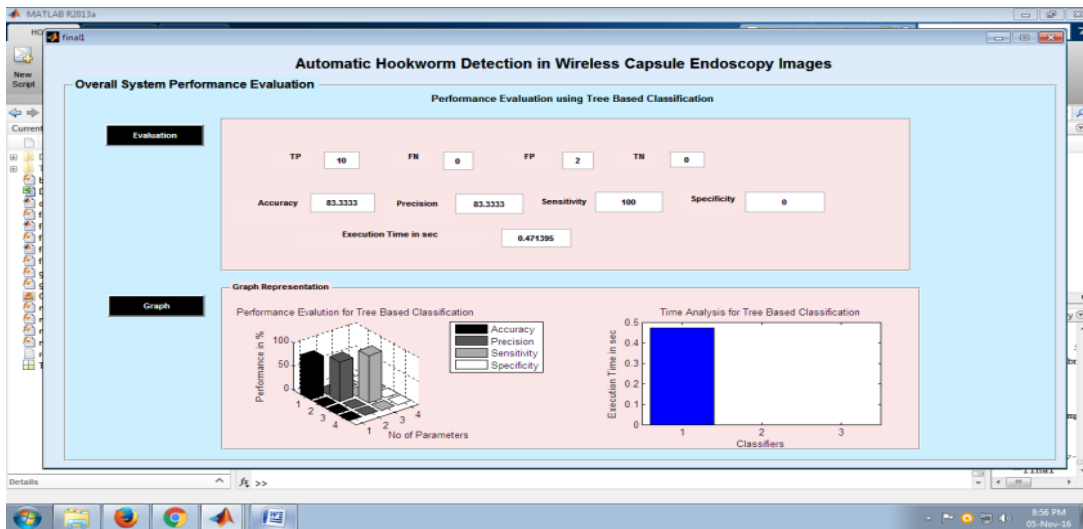


Fig: 10. Feature extraction

Classification

The classification is done by using RUSBOOST algorithm. This algorithm is used to classify the WCE images which

give the final result that is whether the output image is having hookworm or not. The classification requires more database images.

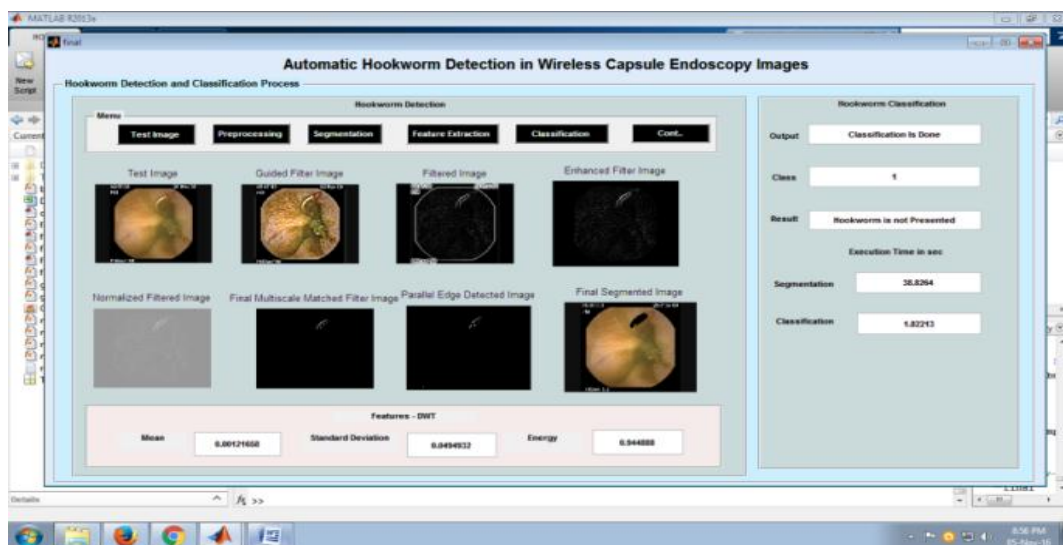


Fig: 11. Classification

CONCLUSION

Thus WCE pictures from completely different patients are accustomed notice the hookworm by the Rusboost algorithmic rule. Because the planned algorithmic rule involves following steps: preprocessing, MDMF, PPRD and Rusboost algorithmic rule. By applying a Rusboost algorithmic rule the options are compared and at last, it is often detected whether or not the input image has hookworm or not. Algorithmic rule achieves higher performance and high sensitivity.

Future Work

As a future work, the temporal and spatial relationship between consecutive images will be taken into consideration to further improve the overall performance and can be continued in future by changing the classifier.

REFERENCES

1. WHO, "World health organization-hookworm disease," http://www.who.int/vaccine_research/diseases/soa_parasitic/en/index2.html, 2013.
2. G. Iddan, G. Meron, A. Glukhovsky, and P. Swain, "Wireless capsule endoscopy," *Nature*, vol. 405, p. 417, 2000.
3. B. Li and M. Q.-H. Meng, "Tumor recognition in wireless capsule endoscopy images using textural features and svm-based feature selection," *Information Technology in Biomedicine, IEEE Transactions on*, vol. 16, no. 3, pp. 323–329, 2012.
4. B. Li and M. Max Q-H, "Computer-based detection of bleeding and ulcer in wireless capsule endoscopy images by chromaticity moments," *Computers in Biology and Medicine*, vol. 39, no. 2, pp. 141–147, 2009.
5. A. Karargyris and N. Bourbakis, "Detection of small bowel polyps and ulcers in wireless capsule endoscopy videos," *Biomedical Engineering, IEEE Transactions on*, vol. 58, no. 10, pp. 2777–2786, 2011.
6. Y. Shen, P. Guturu, and B. P. Buckles, "Wireless capsule endoscopy video segmentation using an unsupervised learning approach based on probabilistic latent semantic analysis with scale invariant features," *Information Technology in Biomedicine, IEEE Transactions on*, vol. 16, no. 1, pp. 98–105, 2012.
7. S. Segui, M. Drozdal, F. Vilarino, C. Malagelada, F. Azpiroz, P. Radeva, and J. Vitria, "Categorization and segmentation of intestinal content frames for wireless capsule endoscopy," *Information Technology in Biomedicine, IEEE Transactions on*, vol. 16, no. 6, pp. 1341–1352, 2012.

Cite this article as: K. Vijila Rani, & M. Nisha. (2018). Hookworm and Bleeding Detection in WCE Images using Rusboost Classifier. *Journal of Image Processing and Artificial Intelligence*, 4(3), 13–19. <http://doi.org/10.5281/zenodo.1744883>