

Evaluated Performance of Protocols

¹Dr. Vipul sharma, ²Ms. Shruti Singh, ³Mr. Lokesh Sharma

¹Associate Professor, ^{2,3}Student

^{1,2,3}Department of Electronics Engineering

Sardar Patel University, Uttar Pradesh, India.

Email: vipulec121@gmail.com

DOI: <https://doi.org/10.5281/zenodo.1465590>

Abstract

Maximum organizations attempt to set up their improvement facilities and department workplaces the world over. Personnel running from their houses also are turning into very popular and companies advantage financially by way of making use of less office area, and decreasing total expenses incurred by way of having office employees on website online. To satisfy such necessities agencies broaden a need to speak with these offices over surprisingly cozy, personal and dependable connections regardless of the area of the workplace. The VPN performs a vital function in setting up an allotted business model.

Keywords: protocol, L2TP, Internet.

INTRODUCTION

Office wished to link with a pc or network at company headquarters it intended putting in devoted leased lines between the locations. These leased traces supplied fantastically rapid and at ease communications among the websites, but they were very costly. To house mobile users organizations ought to set up dedicated dial-in far off get right of entry to servers (RAS). The RAS could have a modem, or many modems, and the organization should have a phone linestrolling to every modem. The cell customers may want to connect with the network this manner, but the pace became extraordinarily slow.

With the appearance of the internet a lot of that has modified. If an internet of servers and community connections already exists, interconnecting computers around the world, then why should a company spend cash and create administrative complications by imposing dedicated leased strains and dial-in modem banks? Properly, the primary undertaking is that we need with the intention to select who receives to see what information. In case you genuinely open up the complete

network to the net it would be clearly not possible to put into effect an effective means of preventing unauthorized customers from gaining access to the corporate network. Groups spend tons of cash to build firewalls and other network security measures aimed in particular at making sure that no person from the general public internet can get into the inner community.

When you consider that facts technology infrastructure in recent times need excessive bandwidth, the examine of the parameters affecting the VPN bandwidth may be very critical. In [3], the VPN technologies were as compared in Linux environment and in [4], the VPNs have been compared in Novell Netware and home windows 2000. Open-supply Linux primarily based VPN solutions were empirically evaluated in [5] and [6]. On this paper windows 2003 is used and the VPN protocols are as compared in terms of bandwidth, window length and CPU usage time. Due to the fact the TCP transit facts packets at a time as much as the scale of the window size, the window length has an impact on standard range of bits transferred in a second. In [7, 8] the impact

of windows size on capability of somecommunique systems are discussed.

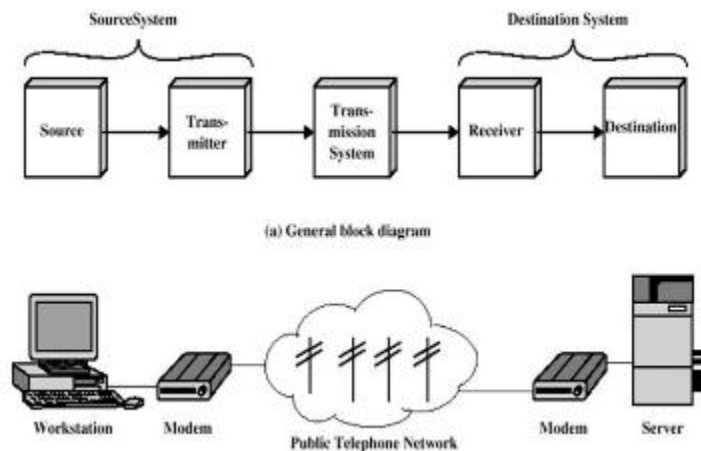


Fig. 1:*Simplified Communication Model*

Protocols used in VPN

A VPN creates a private connection, called tunnels, through systems that use the recordsconversation functionality of an unsecured and public community—the internet. VPNs use at ease protocols toooffer personal communications over the internet; in addition they connect the non-public corporate network to homeoffice employees, or to a far off enterprise website thru digital connections routed via

the net.Businesses which decide to apply VPNs as their means of comfortable communicate might choose between thegreater typically used IPsec and SSL cozy protocols. Each protocols have their blessings and disadvantages;the figuring out elements among the 2 depend on the infrastructure of the company community, its particular securityrequirements, prices, and reliability.

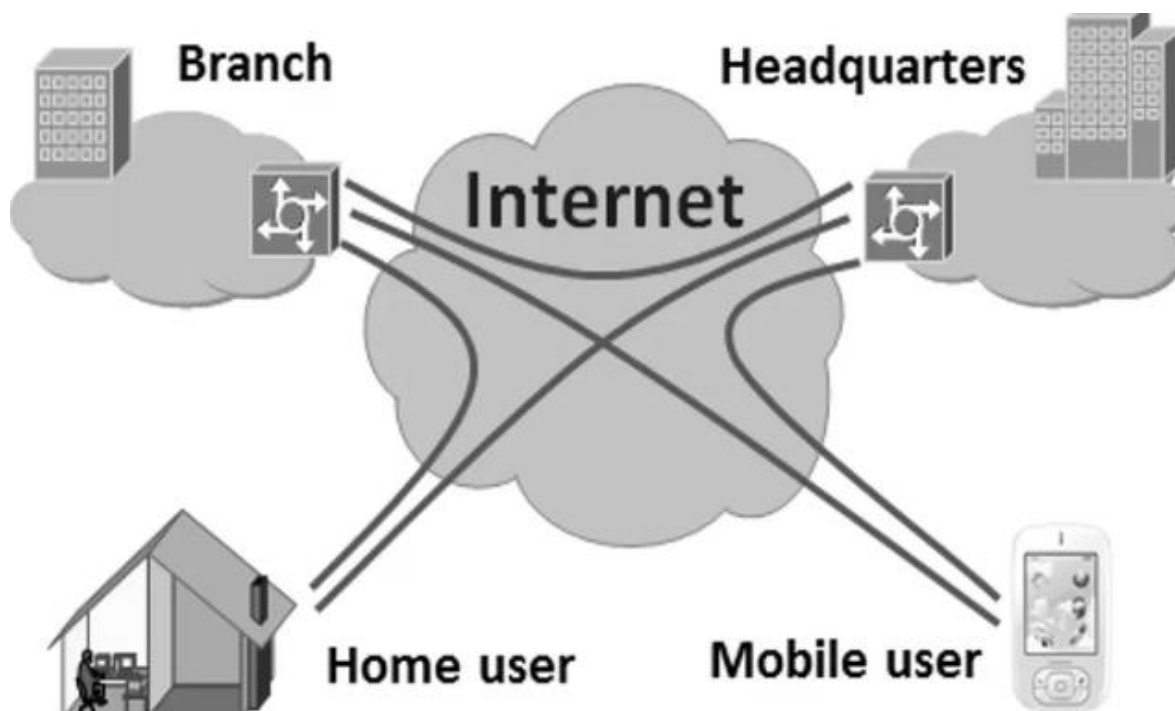


Fig. 2:*VPN (Virtual Private Network)*

SSL

SSL is a VPN technology (evolved by way of Netscape) that is normally used with net browsers to offer users a seamless at ease connection. However SSL can also be used to create VPN tunnels. It protects facts using encryption and makes use of hashing

to ensure integrity. Organising a VPN the usage of SSL involves 3 basic stages: first of all, SSL purchaser and the server negotiate cipher suits, which decide the ciphers to be used, the key alternate and authentication algorithms, as well as the Message Authentication Codes (MAC).

Table. 1: Comparison of Protocols

Attribute	PPTP	L2TP	L2F
Level of Protection	Protect Non IP Protocol	Protect Non IP Protocol	Protect Non IP Protocol, which is transparent to client
Authentication protocol used	-	RADIUS	RADIUS
Can be used as an alternate to IPsec	No	Yes can be used to Protect dial-up communications	No

IPSec

Protocol security (IPsec) is a protocol suite for securing net Protocol (IP) communications by means of authenticating and encrypting every IP packet of a records circulate. IPsec also consists of protocols for establishing mutual authentication among retailers at the beginning of the consultation and negotiation of cryptographic keys to be used all through the consultation. IPsec can be used to guard statistics flows between a pair of hosts (e.g. laptop users or servers), among a couple of protection gateways (e.g. routers or firewalls), or between a safety gateway and a host. Parent 1 explains the state of affairs in which IPsec is used.

PPTP

PPTP is an extension of point-to-point protocol (PPP) and its popularity is attributed to the ease with which it is able to be configured.

The secure communication created the use of this protocol normally includes three tiers; each needs to be completed prior to the following. Firstly, a PPTP client makes use of a PPP kind connection to establish a hyperlink through the transit community from the supply to the destination. Once this is set up, the PPTP protocol creates a manage connection from the patron to the PPTP server.

Experimental Setup

A VPN take a look at community with TCP/IP protocol is about-up using home windows 2003 network operating systems (determine 2) and not using a domain established. All computer systems and servers are Pentium 4 with three.0GHz CPU and 1GB of memory. They may be linked to a 10/a hundred Ethernet transfer with 100Mbps UTP hyperlinks. The community consists of 3 subnets joined by means of two routers. Two VPN servers act as software program routers and VPN tunnel endpoints.

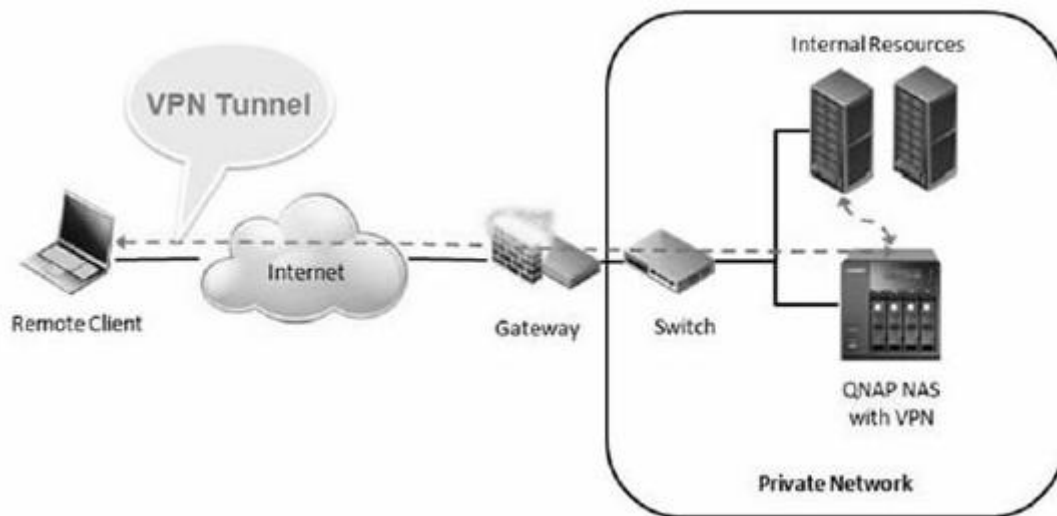


Fig. 3: *Experimental setup of private Network*

CONCLUSION

Every protocol has its very personal merits and demerits which are described in desk 1. It's miles the selection of the company to pick the protocol in line with their protection requirement and enterprise version. The protocols at the inner network of the corporation, seeking out a VPN answer, will play a primary role on this feature.

REFERENCES

1. Kent, S. and Atkinson, R., security architecture for the net Protocol", RFC2401, November 1998.
2. Townsley, W. et al, "Layer two Tunneling Protocol - L2TP", RFC 2661, August1999.
3. Gleeson, B. et al, "A Framework for IP based totally virtual private Networks", RFC2764, February 2000.
4. Hamzeh, okay. et al, "point-to-factor Tunneling Protocol (PPTP)", RFC 2637, July1999.
5. Oppliger, R., "protection technology for the world huge internet", Artech residencelaptop Library, 2000.
6. Venkateswaran, R., "virtual personal Networks", IEEE Potentials mag,February/March 2001.
7. Yuan, R. and Strayer, T., "virtual private Networks, Addison-Wesley, 2001.
8. Perlmutter, B. and Zarkover, J., "virtual non-public Networking: A View from the
9. Trenches", Prentice hall PTR, 2000.

Cite as:

Dr.Vipul sharma, Ms. Shruti Singh, & Mr. Lokesh Sharma. (2018). Evaluated Performance of Protocols. Journal of Optical Communication Electronics, 4(3), 1–4.
<http://doi.org/10.5281/zenodo.1465590>